

Dairy Farmers of New Brunswick
Milk Matters: Production and Payment Summary Report for September 2022

Quota Exchange for October, 2022

	Price in Dollars	# of Sellers	Kgs Offered By Sellers	Total Cum. kgs	Difference Between Sellers/Buyers	Total Cum. kgs	Kgs Wanted By Buyers	# of Buyers
QESP	\$24,000.00		5.0	5.0	520.0	525.0	525.0	
TOTALS		3	5.0				525.0	31

QESP = Quota Exchange Selling Price

QESP = Le prix de vente de quota

5.0 of 525.0 kgs wanted at or above the Quota Exchange Selling Price of \$24,000.00 were purchased.

5.0 des 525.0 kilos demandé au prix de vente de \$24,000.00 ou au dessus ont été acheté. Il y avait un total de 5.0 kgs proposés à la vente et le total des offres pour l'achat de 525.0kg.

There was a total of 5.0 kgs offered for sale and total bids to purchase of 525.0 kgs.

Next Exchange closes at 4:00 p.m., Tuesday November 1, 2022

Results are available Friday November 4, 2022

Month	Oct	Sept	Aug	Jul	Jun	May	6 month avg.
Clearing Price	\$24,000	\$24,000	\$0	\$0	\$24,000	\$24,000	\$24,000
Kgs on Exchange	5.0	28.9	.0	.0	5.4	3.0	10.6
Kgs by Transfer	.0	91.6	149.2	96.6	259.0	77.3	112.3

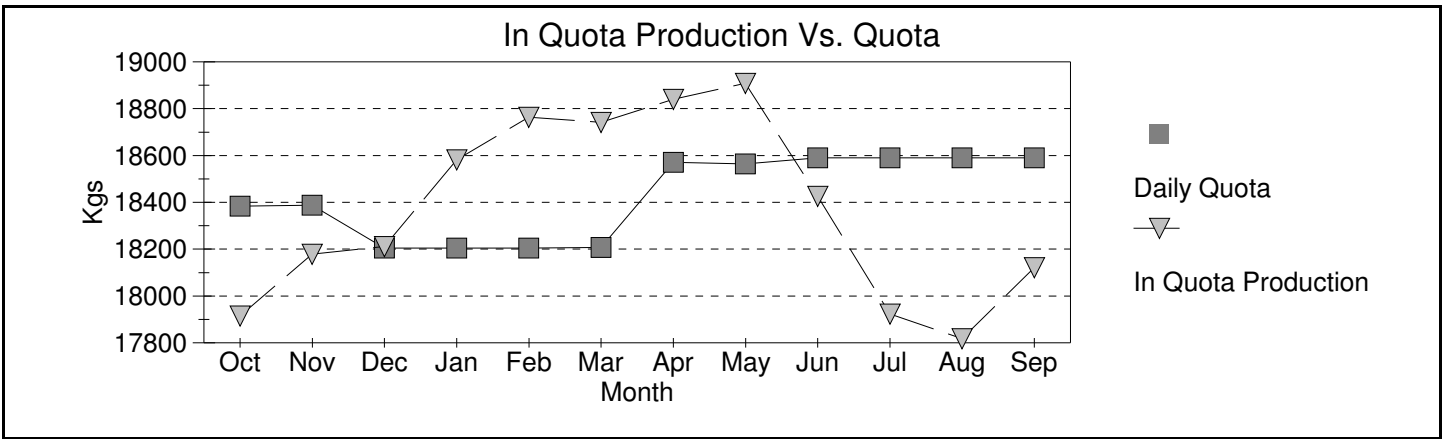
NB Domestic Milk Pool

Over Quota	BF Kg	BF \$/kg	BF \$	PT Kg	PT \$/kg	PT \$	OS Kg	OS \$/kg	OS \$
September 2022	118	-\$2.7327	(\$323)	89	-\$1.9107	(\$171)	151	-\$0.3917	(\$59)
12 Months	4,288	-\$2.7325	(\$11,716)	3,275	-\$1.9106	(\$6,258)	5,685	-\$0.3917	(\$2,227)
SNF >2.3									
September 2022				2,286	\$0.0000	\$0	4,184	\$0.0000	\$0
12 Months				9,207	\$0.0000	\$0	17,209	\$0.0000	\$0
SNF 2.0<=>2.3									
September 2022				30,543	\$3.7174	\$113,539	55,347	\$3.7174	\$205,748
12 Months				360,181	\$3.8322	\$1,380,290	652,364	\$3.8370	\$2,503,121
Domestic Market									
September 2022	543,501	\$13.0462	\$7,090,616	388,258	\$10.6648	\$4,140,694	694,580	\$9.9000	\$625,122
12 Months	6,699,079	\$12.3211	\$82,539,874	4,798,066	\$10.1228	\$48,570,097	8,541,248	\$9.9000	\$7,687,123

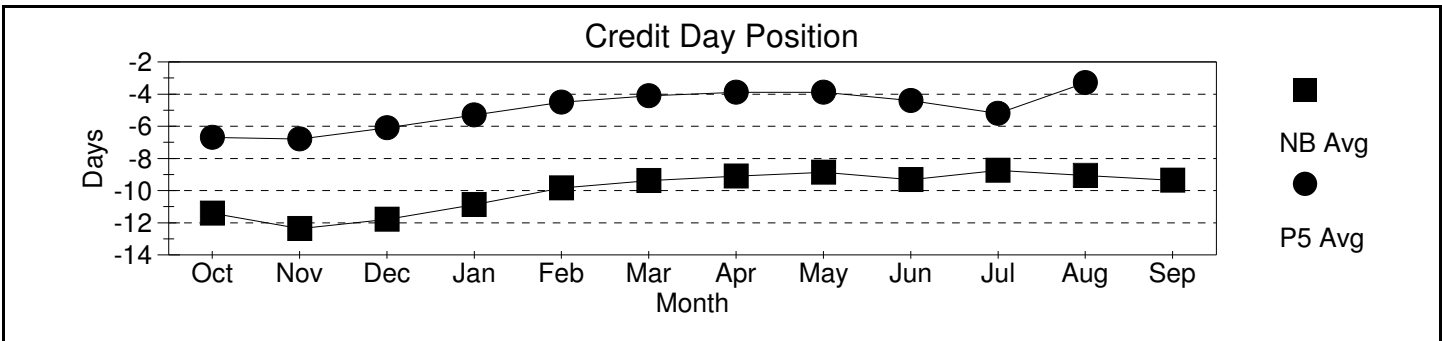
Production & Payment

Revenue	\$/HL	BF \$	PT \$	OS \$				Total Paid \$
September 2022	\$93.11	\$7,090,293	\$4,254,063	\$830,810				\$12,175,166
12 Months	\$89.95	\$82,528,157	\$49,944,129	\$10,188,018				\$142,660,304
Deductions	Transport	Promotion	Admin	Lab Fee	Research Levy	Total Ded Per HL		Total Deductions
	Per HL	Per Kg of Total Solids						
September 2022	\$3.79	\$0.1015	\$0.0663	\$0.0090	\$0.0016	\$6.13		\$802,362
12 Months	\$3.26	\$0.1129	\$0.0578	\$0.0099	\$0.0016	\$5.66		\$9,015,887
Quality	Somatic Cell Count	Standard Plate Count	Lab Past. Count					Rejected Loads
September 2022	198,893	12,431	520					0
12 Months	171,926	8,129	193					0
Production & Component Tests	Production Volume	Butter Fat	Protein	Lactose & O.S.	Total solids	SNF Ratio		
September 2022	13,078,692	4.1565	3.2203	5.7671	13.1439	2.1622		
12 Months	158,719,015	4.2234	3.2578	5.8068	13.2880	2.1463		

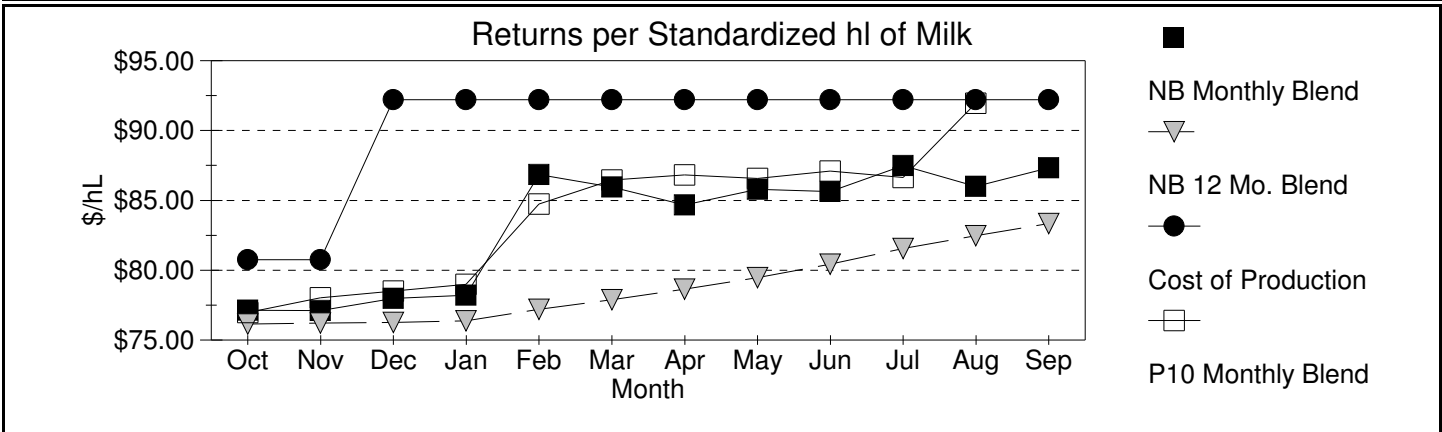
Milk Matters: Production and Payment Summary Report for September 2022



Credits



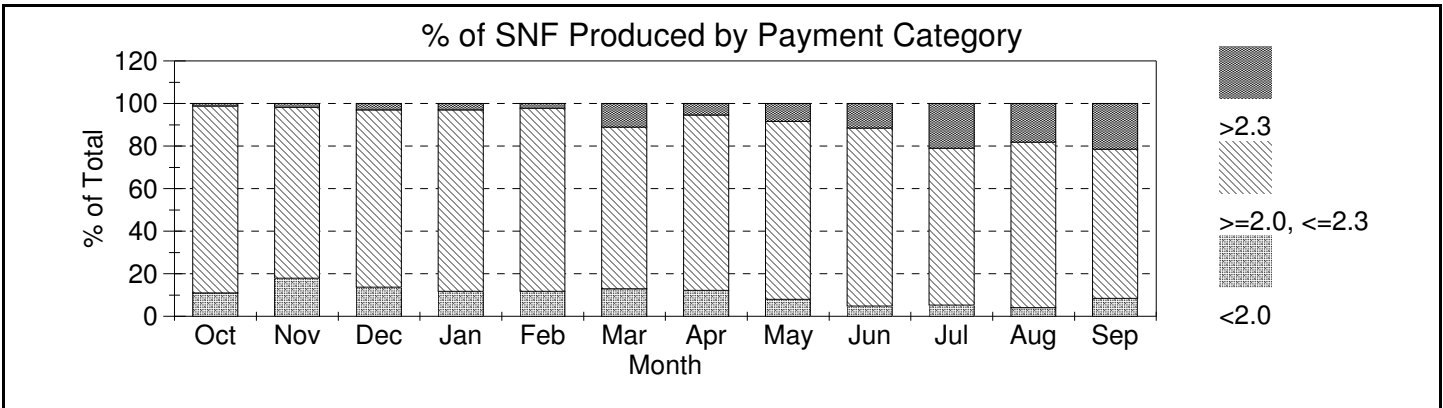
Month	Oct	Nov	Dec	Jan	Feb	Mar	Apr	May	Jun	Jul	Aug	Sep
Incentive Days Issued	1.00	2.00	0.00	0.02	0.06	1.06	1.06	1.06	1.06	0.07	1.06	3.06
Incentive Days Used	0.44	0.93	0.00	0.01	0.05	0.72	0.64	0.65	0.55	0.05	0.39	0.96
Days Over Quota	0.05	0.01	0.00	0.00	0.04	0.01	0.01	0.02	0.00	0.03	0.05	0.01
Days Lost	-0.36	-0.39	-0.44	-0.14	-0.07	-0.07	-0.10	-0.14	-0.10	-1.54	-1.33	-1.37
Days Exchanged	0.90	1.14	0.77	0.93	0.94	1.25	1.11	0.96	1.15	0.96	0.17	0.21
Credit Exch Clearing Price	\$3.99	\$4.00	\$3.75	\$5.43	\$7.78	\$7.78	\$5.00	\$3.00	\$3.11	\$2.50	\$0.99	\$0.20



Month	Oct	Nov	Dec	Jan	Feb	Mar	Apr	May	Jun	Jul	Aug	Sep
SNF 2.00-2.30 \$/kg	\$2.81	\$3.17	\$3.44	\$3.66	\$3.92	\$4.09	\$4.18	\$4.20	\$4.21	\$4.21	\$3.83	\$3.72

A standardized hl of milk contains 3.60 kg/hl BF, 3.23 kg/hl PT and 5.69 kg/hl LOS

SNF Policy



SNF/BF: Avg Ratios

Month	Oct	Nov	Dec	Jan	Feb	Mar	Apr	May	Jun	Jul	Aug	Sep
< 2	1.91	1.92	1.91	1.91	1.92	1.92	1.93	1.92	1.91	1.93	1.89	1.91
2 < > 2.3	2.14	2.14	2.14	2.14	2.15	2.15	2.16	2.16	2.17	2.18	2.18	2.15
> 2.3	2.34	2.31	2.33	2.33	2.31	2.33	2.36	2.34	2.36	2.34	2.34	2.31
Provincial	2.12	2.10	2.12	2.12	2.12	2.14	2.14	2.16	2.18	2.20	2.19	2.16